



# BUMBLE BEE® GM

## GENERAL MANUFACTURING

### High Capacity, Value Pricing

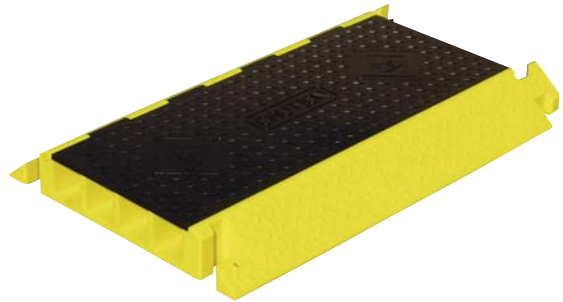
Bumble Bee® GM is designed to protect the valuable cables, lines and connectors used in robotic manufacturing cells. It is flexible enough to serve in automotive, appliances and other high-volume, limited access, automated manufacturing facilities.

#### High Capacity - Designed for Manufacturing Environments

- 4 oversized channels – each channel is 3” in width and height
- High volume capacity – up to 1300 cubic inches

#### Space Efficient

The 4 channel Bumble Bee GM is only 24” wide, taking up little floor space.



#### Protect and Organize Cables, Lines and Hoses

Superior protection for electrical cables, hydraulic and pneumatic hoses and data, video and signal lines.

- Multi-channel design helps organize cables
- Rounded dividers protect cables from snags and tears
- Line of accessories to build a variety of configurations

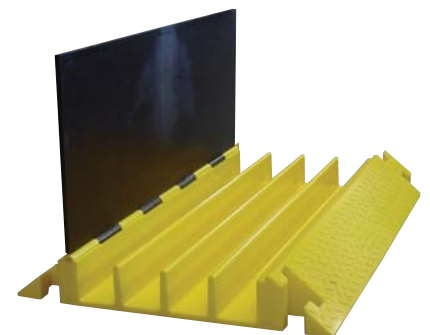
#### Safety Features

Bumble Bee cable protectors, while designed to protect cables, also offer these safety features:

- Highly visible - distinctive black lid and yellow ramps
- Encloses cables – no loose cables, lines or hoses on shop floor
- Skid resistant diamond pattern used on all upper surfaces
- Non-conductive, no metal parts

#### Easy to Assemble and Load

- Single piece design
- Top hinged lid for easy access
- No tools or hardware required to configure



**Specially**

**Designed for**

**High-Volume**

**Manufacturing**

**Facilities**

## Designed to Meet Manufacturing Budget Requirements

The Bumble Bee GM series is designed to save cost and weight.

- “Egg crate” construction and 1/4” leading edge of ramps
- Lid and base plate are 1/4” thick
- Lower cost and better flexibility than cable trays
- Moveable and reusable

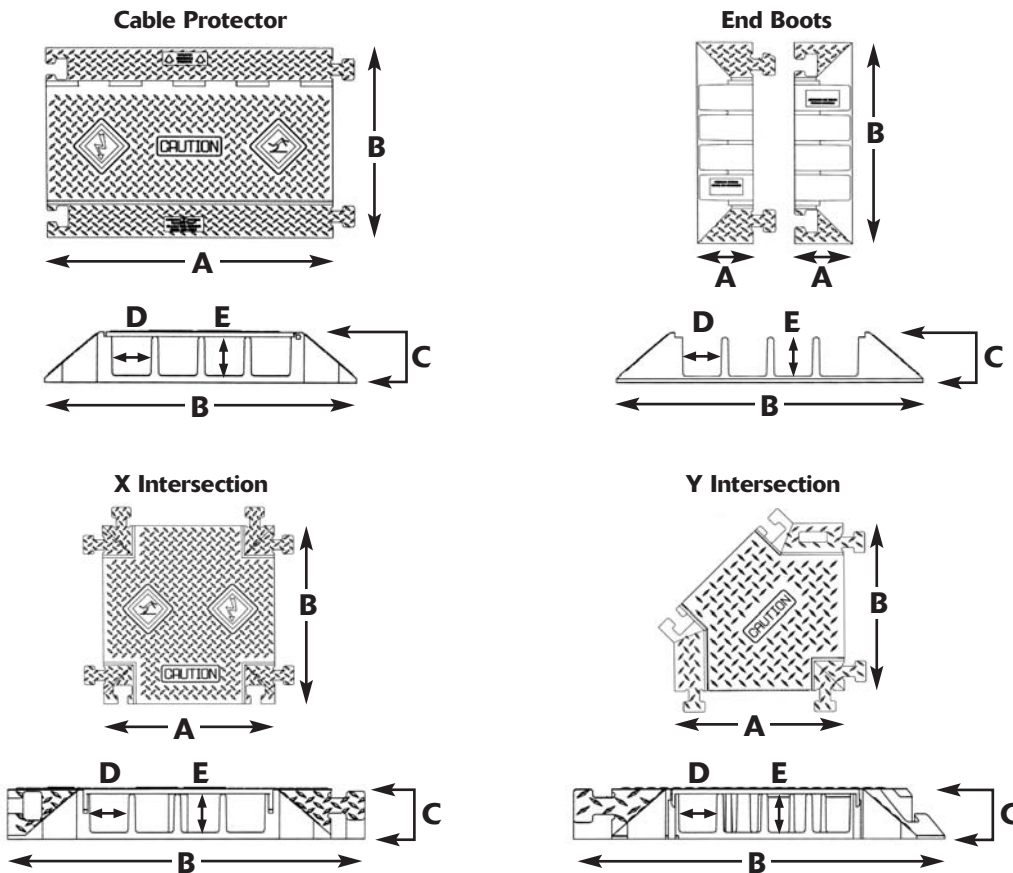
## Very Durable

- Made from Durathane® – a proprietary cast molded polyurethane with superior tear and abrasion resistance, and dynamic load bearing properties. It is field proven in over 20 years of use.
- Resistant to oil and solvents
- Highly impact resistant

## Stays Connected

- T-bone connector is designed to hold cable protectors together and to resist separation under heavy use

*Drawings are representational and are not necessarily to scale.*



## Components and Dimensions (4 Channel System)

DESCRIPTION	MODEL #	Length (A)	Width (B)	Height (C)	Weight (lbs.)	Channels Width (D)	Channels Height (E)
Cable Protector	BB4-300GM	36.0"	24.0"	4"	48	3"	3"
End Boots (pair, M/F)	BB4EB-300GM	7.2"	24.0"	4"	8	3"	3"
X Intersection	BB4X-300GM	25.5"	23.8"	4"	38	3"	3"
Y Intersection	BB4Y-300GM	26.2"	24.0"	4"	34	3"	3"

All measurements and weights are nominal.

Please refer to [www.yjams.com](http://www.yjams.com) or call our Sales Department at (626) 357-7051 for information regarding warranty limitations.

**YELLOW JACKET**  
CABLE PROTECTORS

A Division of Peterson  
Systems International, Inc.

Tel 626.357.7051

Fax 626.303.3066

Email [sales@yjams.com](mailto:sales@yjams.com)

P.O. Box 1557  
2350 East Central Ave.  
Duarte, CA 91010-2984

[www.yjams.com](http://www.yjams.com)



MADE IN USA